



# GMT MONTHLY MEMBERSHIP PROGRESS REPORT

Results as of: 6/30/2018

Multiple District 11

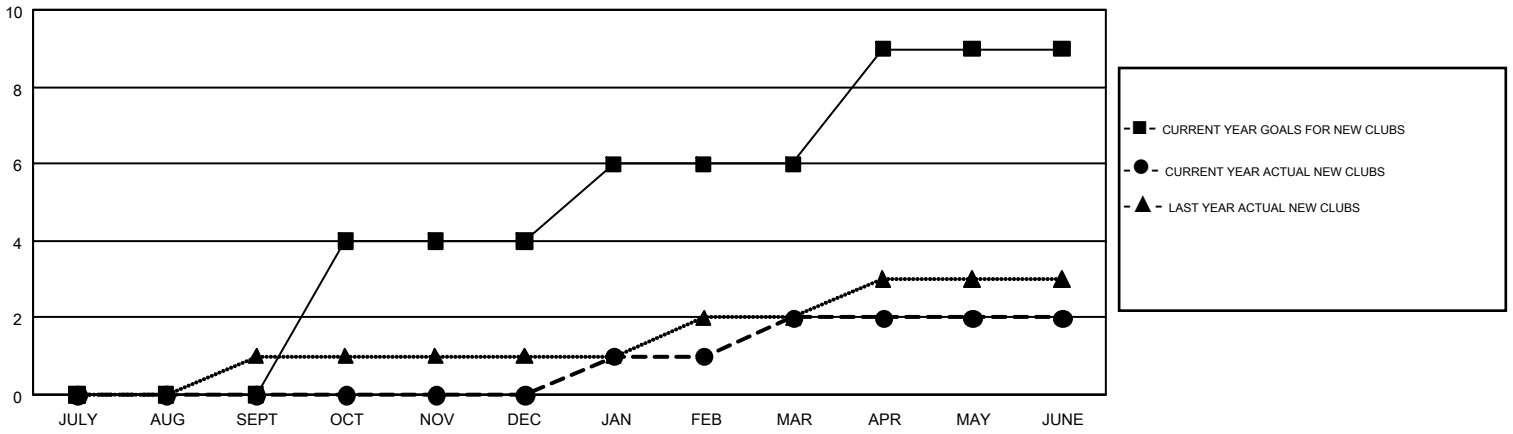
LOCATION: MICHIGAN

GMT: STEVE ANTON

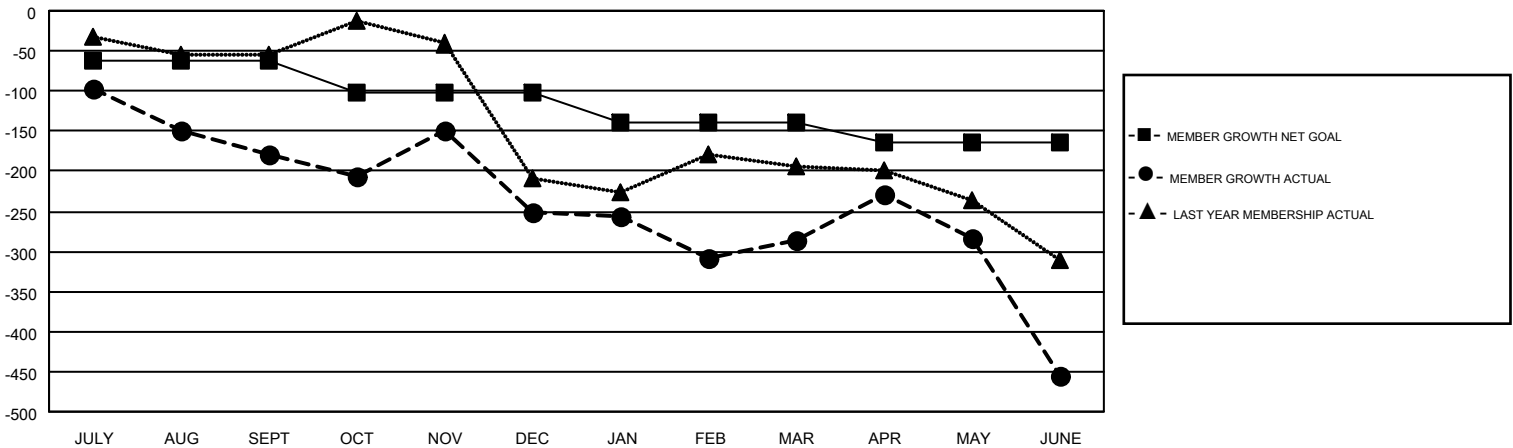
GMT CA 1

Clubs				Members			
RESULTS FOR 2017-2018				RESULTS FOR 2017-2018			
QUARTER	NEW CLUB GOAL	NEW CLUBS	DROPPED CLUBS	QUARTER	MEMBER GROWTH NET GOAL	MEMBER GROWTH ACTUAL	DROPPED MEMBERS ACTUAL (including transfers)
JULY/AUG/SEPT	0	0	2	JULY/AUG/SEPT	-62	207	351
OCT/NOV/DEC	4	0	3	OCT/NOV/DEC	-41	311	354
JAN/FEB/MAR	2	2	3	JAN/FEB/MAR	-37	292	300
APR/MAY/JUNE	3	0	5	APR/MAY/JUNE	-25	458	571

GOALS AND ACTUAL NEW CLUBS CUMULATIVE



GOALS AND ACTUAL MEMBERS CUMULATIVE



DROPPED CLUBS: 13	255 CLUBS OF 389 ADDED 1 OR MORE NEW MEMBERS	<u>GENDER DISTRIBUTION</u>	
<u>DROPPED MEMBERS</u>		MALE	7,241 (70.15%)
DECEASED	196	FEMALE	3,081 (29.85%)
CLUB CANCELLED	74	TOTAL FAMILY UNIT MEMBERS	
OTHER	1,306	FAMILY MEMBERS PAYING HALF DUES	
TOTAL	1,576	TOTAL FAMILY UNIT MEMBERS	
		FAMILY MEMBERS PAYING HALF DUES	

[CLICK HERE FOR CUMULATIVE MEMBERSHIP DATA](#)

TOTAL FAMILY UNIT MEMBERS	0
FAMILY MEMBERS PAYING HALF DUES	0